

another language

performing arts company

Season XXVI

Volume 8 Issue 1

January-March 2011

Information

Historical Documentation
The Artists' Exchange
1990-1994



Jennifer Salk Dance Performance

Eighteen Artists' Exchanges involving well over a hundred artists, held over the span of four and a half years at the Another Language Performance Studio in the Artspace Complex are now available at www.anotherlanguage.org/history.



Lance Daniels, Charlotte Bell & Katayoun Firouzbakchch Yoga Performance

Presentations are available!

For further information go to

www.anotherlanguage.org/education/papers

Contact Another Language

to have a representative talk with

your organization about scheduling

a presentation.

For Information Call: (801) 531-9419

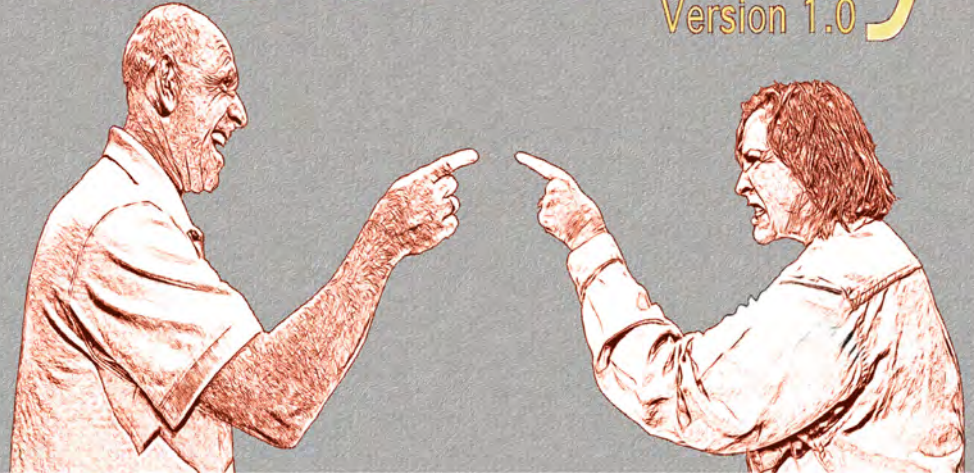
e-mail: info@anotherlanguage.org

www.anotherlanguage.org

Spotlight

Duel•Ality

Version 1.0



Another Language Performing Arts Company invites you to *Duel•Ality*, an upcoming telematic cinema project created and performed by Company Directors

Elizabeth and Jimmy Miklavcic.

This original work deals with concepts of relationships and personal duality.

Duel•Ality explores the many sides revealed by the two characters *Duel* (Jimmy Miklavcic), and *Ality* (Elizabeth Miklavcic).

This telematic work focuses on two people and the way this duo encounters and functions in this technological world. It,

“You cannot expect your computer to be the same day after day. It is almost a living organism, it changes.” –*Duel•Ality* Excerpt–

also, looks at the relationship of man and woman, human and computer, software and hardware, the association of live creativity and projected elements, and the connection between creative elements and how the audience perceives them.

Another Language Board of Directors



National Advisory Board

Charles Amirkhania

Executive Director
Other Minds Festival
San Francisco, CA

Jeff Carpenter

Multimedia Specialist, NCSA
Urbana Champaign, IL

Kent Christensen

Artist
New York, NY

Jennifer Gray

Graphic Designer
Thousand Oaks, CA

Utah Advisory Board

Pauline Blanchard

The Pauline Blanchard Trust

Wayne Bradford

Systems Administrator
University of Utah

Susan Roberts

Computer Graphics Designer
Spencer S. Eccles
Health Sciences Library

Board of Directors

Kathy Valburg

President
Ice Skating Instructor

Victoria Rasmussen

Vice President
Broad Band Computer Professional

Sylvia Ring

Registered OR Nurse

Jan Abramson

University of Utah
Health Sciences

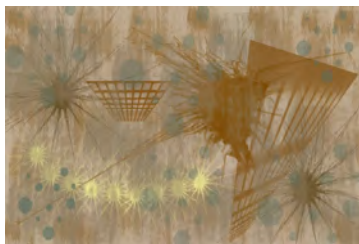
Staff

Beth Miklavcic

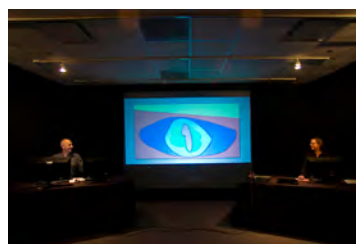
Artistic Director

Jimmy Miklavcic

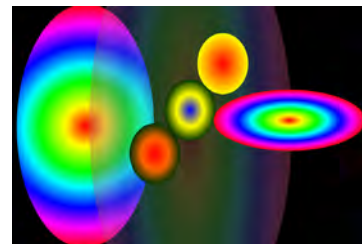
Executive Director



E-painting by Elizabeth Miklavcic
Projected in Duel•Ality Performance



Jimmy & Elizabeth Miklavcic
VisLab Black Box Theater



Animation by Elizabeth Miklavcic
Projected in Duel•Ality Performance

Who: Another Language Performing Arts Company
What: Dual•Ality – A Telematic Cinema Performance
When: February 25-26 at 7:00pm and February 27 at 4:00pm
March 4-5 at 7:00pm and March 6 at 4:00pm
Where: Vislab Black Box Theater
University of Utah
Intermountain Network and Scientific Computation Center
155 South 1452 East #294
Salt Lake City, Utah
Admission: 7.00 General, 5.00 Seniors & Another Language Members,
Students from any school with ID - Free Admission
Contact: info@anotherlanguage.org or (801) 531-9419
Website: www.anotherlanguage.org

Dual•Ality performances will be held February 25-26 at 7:00pm, February 27 at 4:00pm, March 4-5 at 7:00pm and March 6 at 4:00pm. The performance space is at the University of Utah Intermountain Networking and Scientific Computation Center and will be in the Visualization Lab Black Box (VisLab) Theater on the second floor, room #294. Tickets are \$7.00 general, \$5.00 for Another Language members and seniors and free for students from any school with current ID. The VisLab seats 15-20 people, so reservations are highly recommended and can be made through the Another Language On-Line Box Office (www.anotherlanguage.org/store); by calling the Another Language Office (801) 531-9419 or emailing info@anotherlanguage.org. An audience discussion will follow the half hour performance.

“In on-line communications...uni-casting is like being in a tunnel all by yourself. There is a fan of singular tunnels expanding throughout the world!”
–Duel•Ality Exerpt–

Another Language Performing Arts Company holds a reputation for creating unique, cutting edge work and *Duel•Ality* will continue in the tradition of the unexpected. Be a part of this one of a kind event by attending the University of Utah performances. Information on live streaming viewing options will be available in the Telematic Cinema section of the Another Language Website.

– Elizabeth Miklavcic

Memberships

Benefits

FRIENDS	under \$25.00	Membership access to website.
MEMBER	\$25.00-\$49.00	Membership access to website. 2 ticket vouchers. Newsletter. Choice of one 11x14 original print or one DVD. 10% off all admission fees and sale items.
CONTRIBUTOR	\$50.00-\$149.00	Membership access to website. 4 ticket vouchers. Newsletter. Choice of two 11x14 original prints or two DVDs or mix and match. 10% off all admission fees and sale items.
SPONSOR	\$150.00-\$499.00	Membership access to website. 6 ticket vouchers. Newsletter. Choice of three 11x14 original prints and one DVD. 10% off all admission fees and sale items.
PATRON	\$500.00-\$999.00	Membership access to website. 8 ticket vouchers. Newsletter. Choice of four 11x14 original prints and two DVDs. 10% off all admission fees and sale items.
BENEFACTOR	\$1,000 or more	Membership access to website. 10 ticket vouchers. Newsletter. Full set of five 11x14 original prints and all company DVDs. 10% off all admission fees and sale items.



Roses in Vase



Floating Feathers



Winter Forest



Fire and Water



Large Feather

Name: _____

Address 1: _____

Address 2: _____

City: _____ State: _____ Zip/PostalCode: _____

Phone: _____ E-mail: _____

Pledge amount: _____

Thank you for your support!

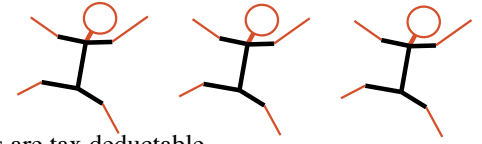
Choice of Company DVDs available on Another Language Website.

Another Language is a 501(c)(3) non-profit organization, donations are tax deductible.

Memberships can be renewed on line at
<http://www.anotherlanguage.org/sponsors/pledgeform>
 or
 Mail checks to:
Another Language Performing Arts Company
991 South Windsor Street
Salt Lake City, UT 84105-1335



Sponsors



Another Language is a 501(c)(3) non-profit organization, donations are tax deductible.

Friends & Members:

Janice Abdulian
Kathy Chamberlain
Nanette Davila
Mark Dresser
Carol Freeman-In Memoria
Professor Joe Geigel
Greg Geilman
Dave & Mary Hanscom
Eileen Keen
Hanelle Miklavcic
Kathy & Darrell Valburg
Nicola & Rus Whaley
Jo-Ann Wong

Contributors:

Jan Abramson
Wendy Ajax
Dr. Tanya Johnson Ph.D.
Deborah & Robert McDermott
Sylvia Ring
Suzanne Stensaas

Sponsors:

Pauline Blanchard
Barbara & Dave Chamberlain
Lynn Decker
Victoria Rasmussen

Patron:

Kent David Christensen



“Supported by the Utah Arts Council, with funding from the State of Utah and the National Endowment for the Arts, which believes that a great nation deserves great art.”