

# another language

performing arts company

Season XXIII

Volume 5 Issue 4

October-December 2008

## Information

Presentations are available!  
For further information go to  
[www.anotherlanguage.org/education/papers](http://www.anotherlanguage.org/education/papers)  
Contact Another Language  
to have a representative talk with  
your organization to schedule a  
presentation.

Coming March 2009  
*InterPlay: AnARTomy*  
An examination of the human  
body revealed through multi  
leveled cinematic imagery and  
performance!



*Jimmy & Beth Miklavcic by Kings College Chapel, Cambridge University, England*

*We left the house at 11:00  
am on September 12, flew  
to Atlanta, had a three hour  
layover, and then "over the pond"  
to Heathrow, London, arriving at  
12:00pm on Saturday September 13.  
We stood one hour in customs  
- Border Control - then, stood  
in line to buy tube tickets from  
Heathrow to Kings Cross Station.  
Stayed at Kings Cross Station  
for one hour and a half while  
we activated our train passes and  
figured out which train to catch.  
Construction on the route to  
Cambridge caused a rerouting to  
Royston, then a bus to Cambridge  
Train Station, where we took  
a taxi that dropped us off at  
the wrong location, where we  
waited another half hour before*

*catching another taxi that took  
us to West Road and the Stephen  
Hawking Building where it took us  
another half hour to check in at  
the Porters Lodge. We took the  
lift up in the Stephen Hawking  
Building and arrived in our room at  
4:30pm on Saturday September 13.*

*Not having eaten since we were  
on the plane to London Heathrow  
we walked on Queens Road to  
Silver Street and found a campus  
pub, The Anchor, where we had  
Guinness, dinner and watched  
the punting boat circus on  
the River Cam. Then we made  
it back to our room around  
6:00pm, collapsed, wonky from  
the 7-hour time change, which  
changes our internal clock from*

For Information Call: (801) 531-9419  
e-mail: [info@anotherlanguage.org](mailto:info@anotherlanguage.org)  
[www.anotherlanguage.org](http://www.anotherlanguage.org)

## Another Language Board of Directors



### National Advisory Board

**Charles Amirkhanian**

Executive Director  
Other Minds Festival  
San Francisco, CA

**Jeff Carpenter**

Multimedia Specialist, NCSA  
Urbana Champaign, IL

**Kent Christensen**  
Artist

New York, NY

**Jennifer Gray**

Associate Product Manager  
Move, Inc.  
Westlake Village, CA

### Utah Advisory Board

**Pauline Blanchard**

The Pauline Blanchard Trust

**Wayne Bradford**

Systems Administrator  
University of Utah

**Susan Roberts**

Computer Graphics Designer  
Spencer S. Eccles  
Health Sciences Library

### Board of Directors

**Kathy Valburg**

President  
Ice Skating Instructor

**Victoria Rasmussen**

Vice President  
Broad Band Computer Professional

**Sylvia Ring**

Registered OR Nurse

**Jan Abramson**

University of Utah  
Health Sciences

### Staff

**Beth Miklavcic**

Artistic Director

**Jimmy Miklavcic**

Executive Director



day to night. It truly was a planes, trains, automobiles and busses adventure to arrive at the Cambridge Campus.

All the traveling effort was to attend the International Digital Resources for the Humanities and Arts Conference September 14-17, 2008 held at the University of Cambridge, England. The conference took place on Cambridge University's Sidwick Site, the home of the humanities facilities on campus.

Mary Jacobus, the DRHA08 Local Committee Chair states, "Cambridge University is an appropriate place to bring DRHA and sow the seeds for new exploration into 'e-Humanities' through discussions around new collaborative electronic environments, collective knowledge, crossing disciplinary boundaries and innovations in the humanities and the arts. The e-Humanities are flourishing as never before, bringing new scholarly communities and knowledge into being."

On September 16, after two wonderful days of attending talks, discussions and performances at the Gonville and Caius College conference location we presented our paper in the West Road Concert Hall, The Poetics of Challenge - Developing Artistic Works in an Emerging Digital Tool Set; an examination of the challenges of telematic performances using examples from our recent performance of InterPlay: Carnivale, held at the University of Utah Intermountain Network and Scientific Computation Center

March 28-30, 2008. The purpose of the presentation was to examine the challenges faced in the project development process and to find solutions for improvements in the creation of network collaborations. The development of the InterPlay performance series began at the Center for High Performance Computing in 1999 and was built upon the Access Grid infrastructure. An emerging first public performance followed in 2003 and continues to date. These network-centric, live performances have created many unique challenges and at present, the challenges have matured and multiplied with each subsequent performance. The developmental process, the issues surmounted and those currently being addressed were discussed in this presentation.

Feedback from audience members included statements such as, "I feel as though I've just watched NASA scientists

at work." Questions regarding the process of using Access Grid Technology were discussed. One attendee asked, "When will it be possible to meet with as many sites as one's system can sustain?" We responded, "Now!"

Attending and speaking at the conference was a wonderful and inspirational experience where motivational exchanges encourage further exploration in real-time, distributed, surrealistic, cinema.

Sincerely,  
Beth and Jimmy Miklavcic



Beth & Jimmy Miklavcic Presenting At DRHA 08  
Photograph by: Kathleen Richardson

# Memberships

## Benefits

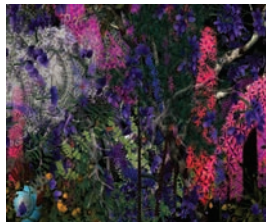
FRIENDS	under \$25.00	Membership access to website.
MEMBER	\$25.00-\$49.00	Membership access to website. 2 ticket vouchers. Newsletter. Choice of one 11x14 original print. 10% off all admission fees and sale items.
CONTRIBUTOR	\$50.00-\$149.00	Membership access to website. 4 ticket vouchers. Newsletter. Choice of two 11x14 original prints. 10% off all admission fees and sale items.
SPONSOR	\$150.00-\$499.00	Membership access to website. 6 ticket vouchers. Newsletter. Choice of three 11x14 original prints. 10% off all admission fees and sale items. Choice of one DVD.
PATRON	\$500.00-\$999.00	Membership access to website. 8 ticket vouchers. Newsletter. Choice of four 11x14 original prints. 10% off all admission fees and sale items. Choice of two DVDs.
BENEFACTOR	\$1,000 or more	Membership access to website. 10 ticket vouchers. Newsletter. Full set of five 11x14 original prints. 10% off all admission fees and sale items. All Company DVDs.



Cracked Rain



Forest Under Water



Forest On Black



Unstill Life



Weep

Name: \_\_\_\_\_

Address 1: \_\_\_\_\_

Address 2: \_\_\_\_\_

City: \_\_\_\_\_ State: \_\_\_\_\_ Zip/PostalCode: \_\_\_\_\_

Phone: \_\_\_\_\_ E-mail: \_\_\_\_\_

Pledge amount: \_\_\_\_\_

Thank you for your support!

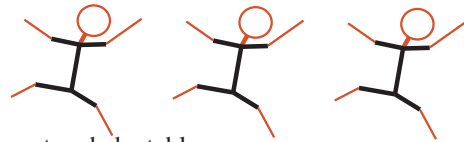
*Choice of Company DVDs available on Another Language Website.*

*Another Language is a 501(c)(3) non-profit organization, donations are tax deductible.*

Make checks payable to: **Another Language**  
 Mail checks to:  
**Another Language Performing Arts Company**  
**991 South Windsor Street**  
**Salt Lake City, UT 84105-1335**



# Sponsors



Another Language is a 501(c)(3) non-profit organization, donations are tax deductible.

## Members:

Kathy Chamberlain  
Scott Chamberlain  
Rindy Engleman  
Dave & Mary Hanscom  
Eileen Keen  
Jody Plant  
Suzanne Stensaas  
Becky Stout  
Kathy & Darrell Valburg  
Nicola & Rus Whaley

## Contributors:

Jennifer & Kevin Gray  
Patricia Green (In Memoria)  
Tanya Johnson  
Sylvia Ring



Travis Eberhard in  
*InterPlay: Carnivale*

## Sponsors:

Pauline Blanchard  
Barbara & Dave Chamberlain  
Lynn Decker  
Victoria Rasmussen  
Manners/Golden Rule Foundation



Another Language received a Readers  
Choice Award for Best Opera/Symphony  
Performance by Travis Eberhard &  
Artemio Contreras in *InterPlay: Carnivale*



“Supported by the Utah Arts Council, with funding from the State of Utah and the National Endowment for the Arts, which believes that a great nation deserves great art.”